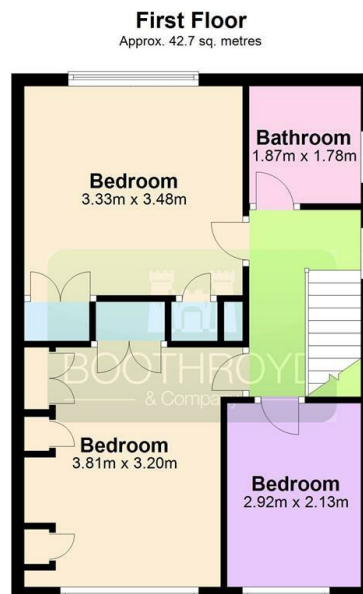




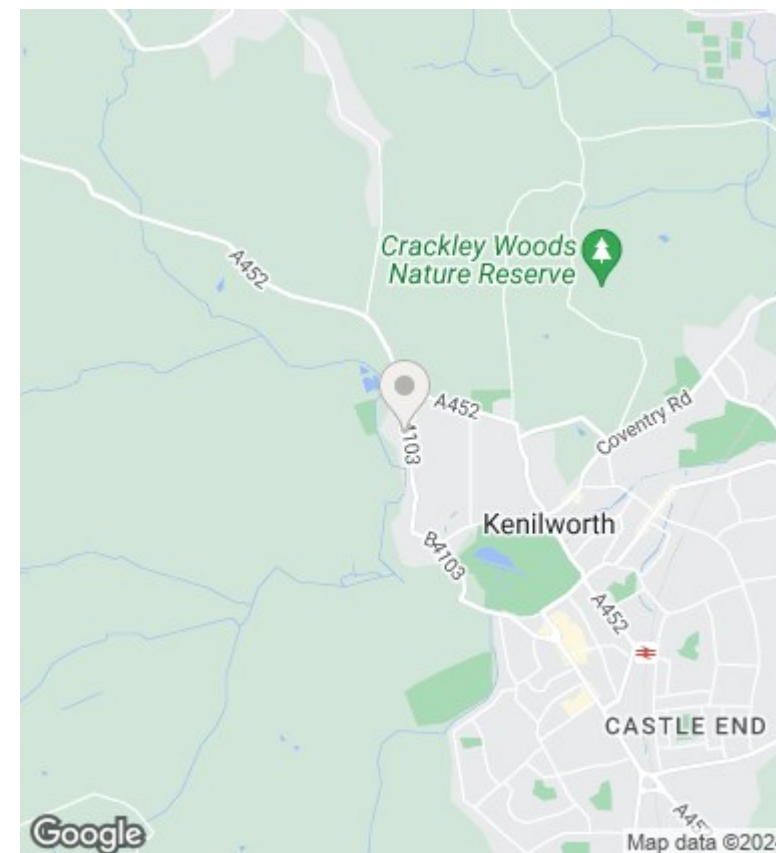
82 Woodcote Avenue, Kenilworth, CV8 1BE

£1,450 PCM

- Three Bedroom Semi Detached House
- EPC Rating C. Pets Considered*
- Property Offered Unfurnished
- Available 16th September 2024
- Extended Fitted Dining Kitchen
- Front Driveway & Detached Garage
- Attractive Rear Garden
- Front Lounge, Porch & Cloakroom
- Double Glazing & Gas Central Heating
- Close To Priorsfield School



Total area: approx. 97.4 sq. metres



Directions

Viewings

Viewings by arrangement only. Call 01926 857244 to make an appointment.

Council Tax Band

D

EPC Rating:

C

Energy Efficiency Rating		
	Current	Potential
Very energy efficient - lower running costs		
(92 plus) A		84
(81-91) B		
(69-80) C	71	
(55-68) D		
(39-54) E		
(21-38) F		
(1-20) G		
Not energy efficient - higher running costs		
England & Wales		EU Directive 2002/91/EC